

DESCRIPTION

Unipower Telecom's DPG1U Series of GMT fuse distribution panels provide distribution and overload protection for 10 or 20 circuits. The one mounting position (1.75 inches) high GMT fuse panels provide 10 single-bus fuses or 20 dual-bus (A&B) fuses (10 per bus). They distribute up to a total of 160 amperes of load current from two separate 80-ampere sources with true A and B distribution and alarm capabilities. A and B sections of the dual-bus panel are isolated and can be separately configured for 12, 24 or 48 volts, positive or negative ground. Fuse sizes are ½ to 12 amperes.

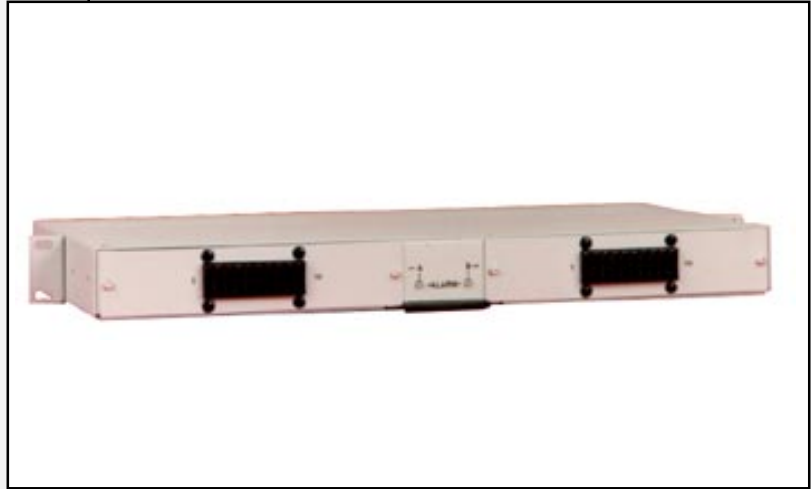
Fuse alarm is indicated by a dual-color LED (green/red) for each bus and two Form C relay contacts per bus.

The panels come with brackets that permit mounting in either a 19- or 23-inch relay rack. They can be mounted from the front of the rack with offsets every quarter-inch from front to back to align with existing rack-mounted equipment.

SAFETY CERTIFICATIONS

UL1950
CSA 22.2, No. 950
EN60-950

TWO-YEAR WARRANTY



DISTRIBUTION PANELS

MODEL	BUS	FUSES
DPG1U-A	SINGLE 80A	10
DPG1U-A-B	DUAL 80A	10/10

FEATURES

- ◆ One Mounting Position High: 1.75"
- ◆ 19- or 23-Inch Rack Mounting
- ◆ GMT Fuses
- ◆ Single Bus with 10 Fuses
- ◆ Dual Bus (A/B) with 10 Fuses per Bus
- ◆ Bus Capacity: 80A per Bus
- ◆ Operating Voltage: 12, 24 or 48VDC
- ◆ Positive or Negative Ground
- ◆ A & B are Isolated Loads
- ◆ A & B Can Be Separately Configured
- ◆ ½A to 12A Fuses
- ◆ Red/Green LED Fuse Alarm
- ◆ Alarm: Two Form C Relay Contacts per Load
- ◆ Rack Offset Every ¼", Front to Back

